



PLAYOUT AUTOMATION

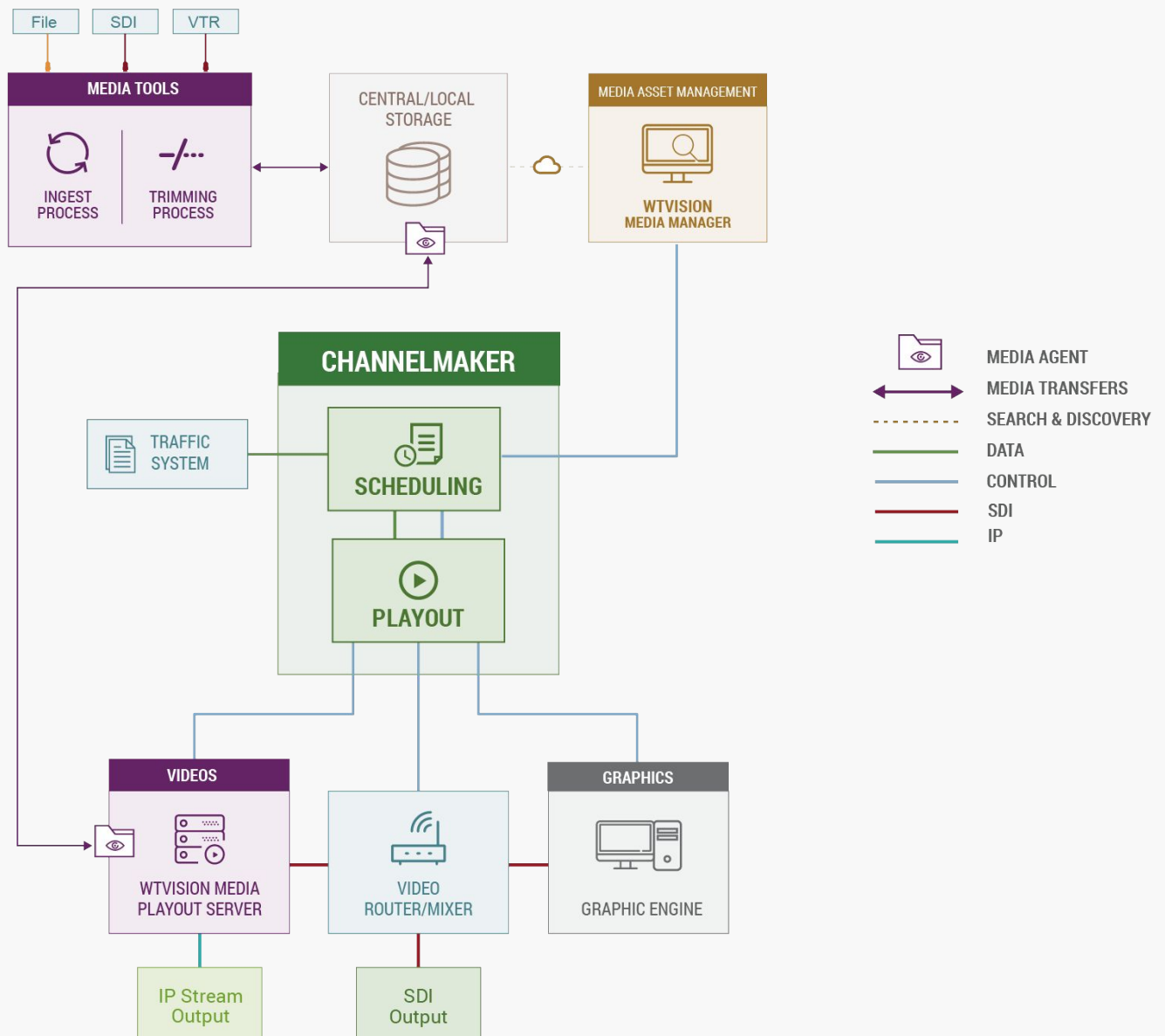
OPTIMIZE YOUR TV CHANNEL

wtvision.com

A VERY FLEXIBLE MASTER CONTROL ROOM

Our playout automation setups have **ChannelMaker** at heart and are extremely flexible, offering a wide range of possibilities.

ChannelMaker's plug-in based architecture is totally adaptable to fit on your existing structure or to rely on wTVision's suite of applications (ingest, trimming, video server, media asset management and much more).





CHANNELMAKER

Flexible, Intuitive, Effective



ChannelMaker allows to easily create, optimize or expand a TV channel.

It can be delivered either as a channel-in-a-box, a multi-system solution or an advertising insertion tool and can be fully customizable to each broadcaster's needs.

PREPARING YOUR RUNDOWN

wTVision offers a scalable, flexible and extremely customizable channel automation solution, designed to ease channel management operations.



With **ChannelMaker** you are able to:

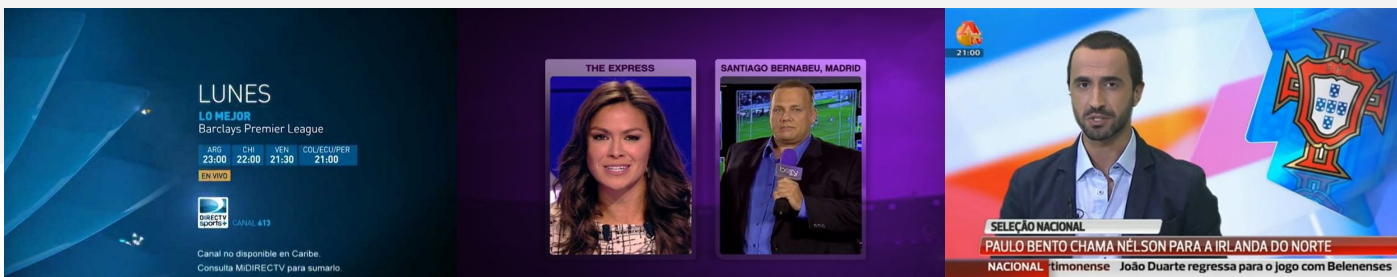
- Control multiple channels from a single workstation
- Control live events and pre-recorded videos
- Catalogue media to generate automatic content on graphics
- Create multiple playlists
- Create playlists off-air and add them to the main timeline
- Import playlists from traffic systems, via file or web based mechanisms
- Export playlists
- Manage the entire channel autonomously with intelligent tracker panel
- Get comprehensive timecode support
- Reschedule in real time: the operator can instantly reschedule the remain rundown (e.g.: unhold the playout or take next clip)

GRAPHICS & VIDEO PLAYOUT

ChannelMaker's main task is controlling the playout of videos.

To do this, you can choose to have wTVision Media Playout Server, which offers a flexible storage capacity to meet your TV channel's needs or we can plug our system into the most relevant industry video servers.

With ChannelMaker your **media** and **graphics** are completely integrated, so the graphics system knows all about your rundown and its meaning. Therefore, ChannelMaker will generate automatic Program Guides and Now/Next graphics with no integration effort or manual input.



KEY BENEFITS

- Supports all the major graphic engines
- Supports multiple video server technologies
- Automatic EPG and Now/Next graphics
- Easy integration with the client's existing graphics
- Effective cataloguing capacity for a better video library management

CONTENT VALIDATION & MONITORING

A single failure in your workflow might mean a costly break in your broadcast. To help you assure a flawless broadcast, we developed several tools to bring security and comfort to your TV channel.



Media Check

Makes sure videos are in place before their air time



Media Validator

Checks for corruption problems or durations inconsistency in source media, before they can cause havoc on-air



Alert Manager

Alerts regarding potential problems (e.g. a device is approaching limit of storage capacity) and possible ways to solve it.



Multi Viewer

Allows users to monitor several channels simultaneously



Reporting Tool

Analyzes if the playout went according to plan, identifying which clips were actually scheduled and broadcasted



Logging Tools

Keeps a record of all the actions performed by the operators and the internal system



Rundown Inconsistency Checks

Automatically checks gaps or overlaps in the video rundown, adding reliability to your broadcast

THIRD-PARTY INTEGRATIONS

Our multi-vendor integration philosophy empowers us to advise and offer customers a wide range of options.

With an open architecture, ChannelMaker can be integrated with a wide range of third-party broadcast devices and solutions.



VIDEO SWITCHERS

Blackmagic Design, Grass Valley, Imagine Communications and others



VIDEO SERVERS

EVS, Grass Valley, Harmonic, Imagine Communications, Vizrt and others



MEDIA ASSET MANAGEMENT

Vizrt



VIDEO ROUTERS

Blackmagic Design, Grass Valley, Imagine Communications, Nevion, SAM and others



GRAPHIC PLATFORMS

Brainstorm, ChyronHego, AVID, Ross Video, Vizrt, Wasp3D and others



GPIO Controllers, Cue tone/VBI/VANC/ DPI, Closed Captioning, Subtitling – Readers/Inserters



TRAFFIC SYSTEMS

Broadway, Broadview, GSoft, MSA Focus, Phoenix7, WideOrbit and others



VTRs

CHANNELMAKER-IN-THE-CLOUD

Manage your channel from everywhere

ChannelMaker-in-the-Cloud is a fully-hosted cloud system based on the latest version of wTVision's playout automation solution and opens up a complete new range of possibilities for broadcasters worldwide.

ChannelMaker sequences and plays out clips previously uploaded to Amazon Simple Storage Service, mixing them with state of the art 3D graphics overlays and sending everything to the channel distribution center where it follows a traditional path towards distribution.



This setup takes contribution from local facilities, as a live input source to ChannelMaker-in-the-Cloud, which is entirely hosted in **Amazon Web Services**.

KEY BENEFITS

- Manage your playout system from any place with an internet connection, at any time
- Increase speed and agility
- Save the space and the money consumed by your data centres
- Benefit from economies of scale
- Go global instantaneously
- Improve the collaboration within your organization

CHANNELMAKER-IN-THE-BOX

Everything your channel needs inside a single system

ChannelMaker-in-a-Box is a robust single-rack unit system that does the job of a traditional automation system. Our proven playout automation software is combined with wTVision Media Playout Server (video server), a real-time graphic engine and other add-ons, delivering a complete and ready-to-use playout solution.

wTVision simplified its playout solution to fit everything needed to manage a TV channel inside a single box.

The advantages include easy installation, easy operation, high reliability and easy maintenance and a ready-to-ship configuration for simplified deployment.



KEY FEATURES

- Includes wTVision's video server supporting multiple broadcast codecs
- Supports external GPI triggers or output your own
- Includes media validation tools
- Has run report
- Imports traffic files in multiple formats including OSC, XML, CVS, JSON, BXF
- FTP media access
- Provides playout logging and error reporting
- Audio - loudness control between 18 and 23 LUFS

SPECIALIZED OUTSOURCING

Our specialized staff has the know-how to manage a complete 24/7 TV channel, mastering wTVision's and the industry's main technologies.

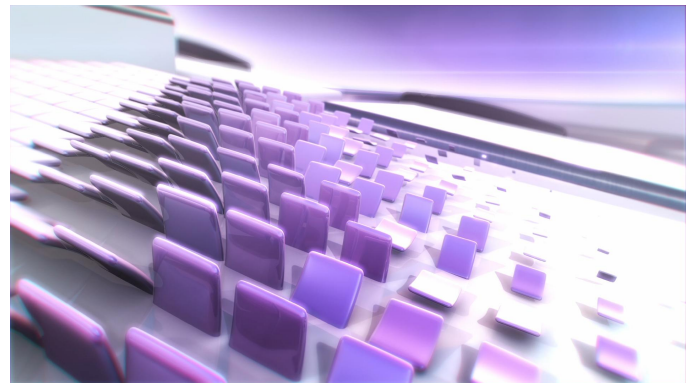
Their responsibilities may include all common procedures of an MCR: playlist management, quality control (audio, image, subtitling), logo insertion, graphics management, media ingest and cataloguing, among others.

Our experienced developers can also be hired for more challenging programming tasks in existing systems.



CHANNEL BRANDING

wTVision has a solid understanding of broadcast graphics design and brand identity creation. We help you to deliver consistent TV branding concepts to your viewers, on time and within budget, by offering tailored creative solutions.



Start building your channel right away!

CONTACT US NOW

sales@wtvision.com
wtvision.com

