



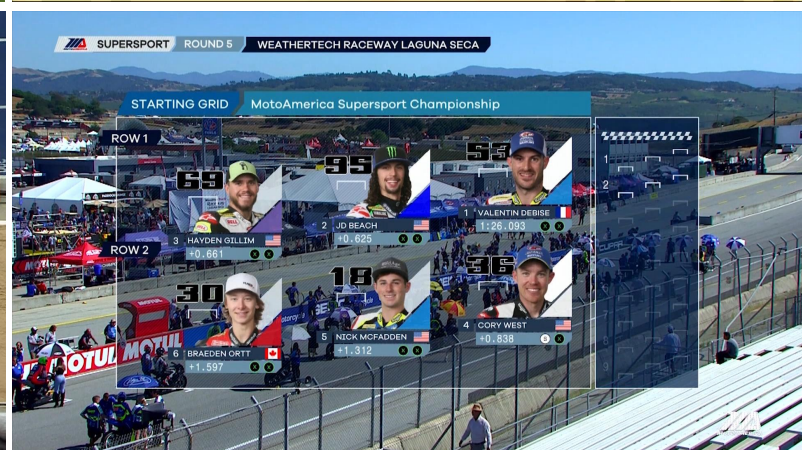
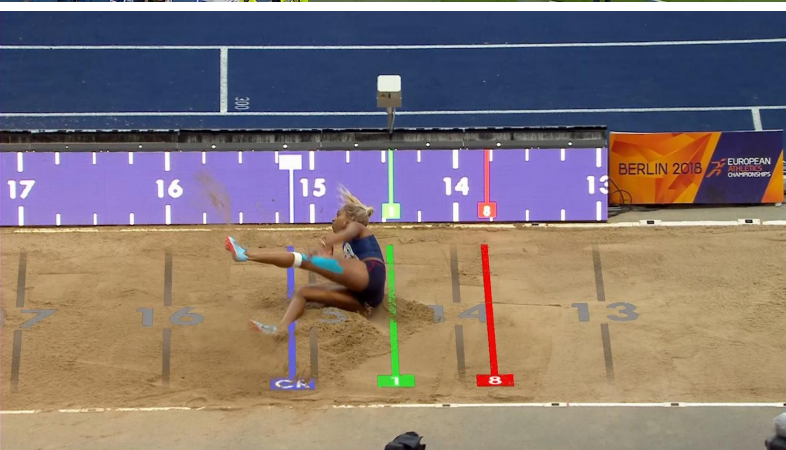
SPORTS SOLUTIONS

SCOUTING, GRAPHICS, AR AND OPERATIONS

WORLD CLASS SPORT EVENTS

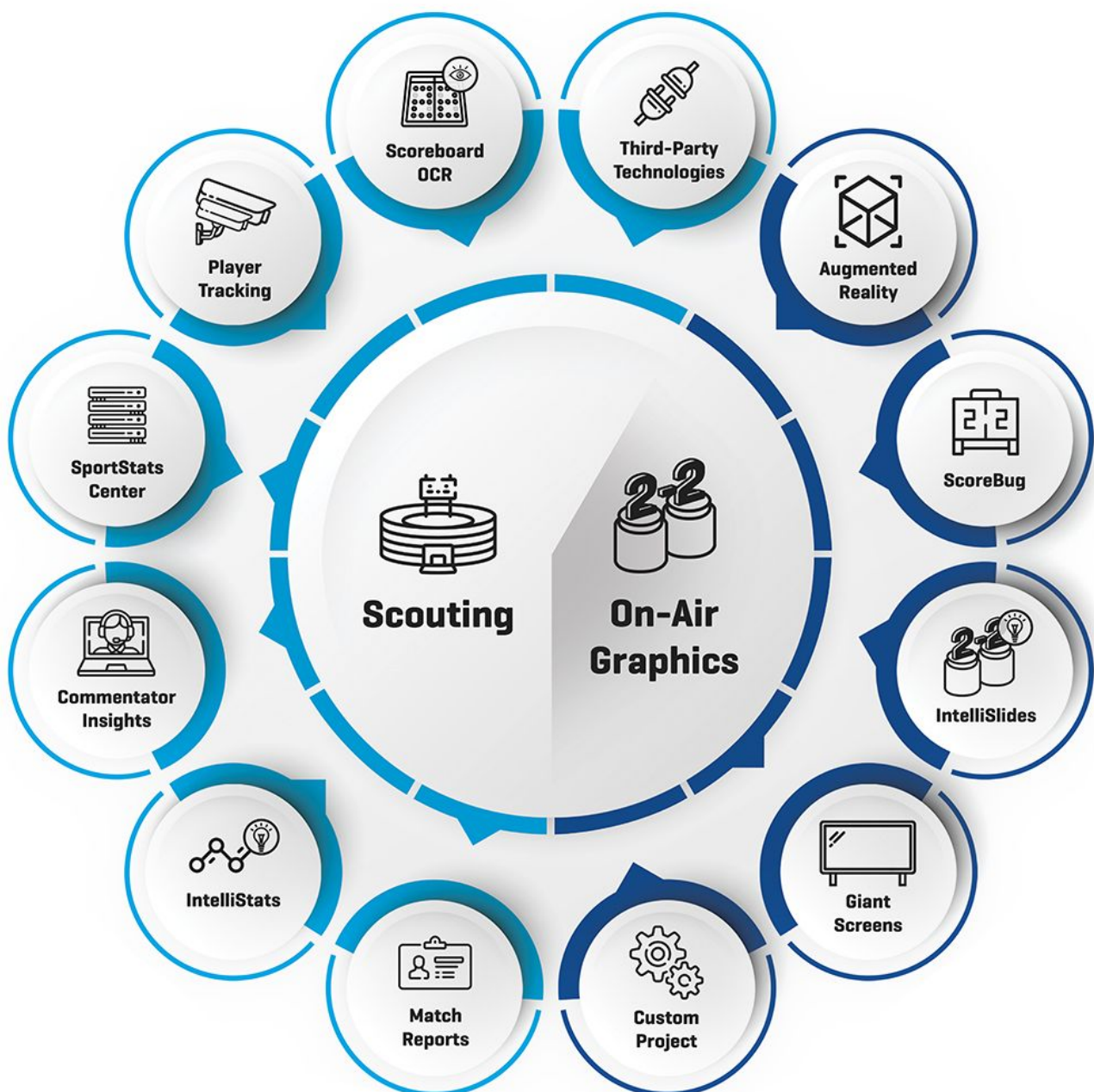
wTvision is a leading company in sports statistics and real-time graphics worldwide. Our expertise covers a wide range of sports and locations, offering a unique combination of experience and flexibility.

Our portfolio includes major competitions in almost any given sport powered by our integrated solutions comprising data, graphics, augmented reality and live operations.



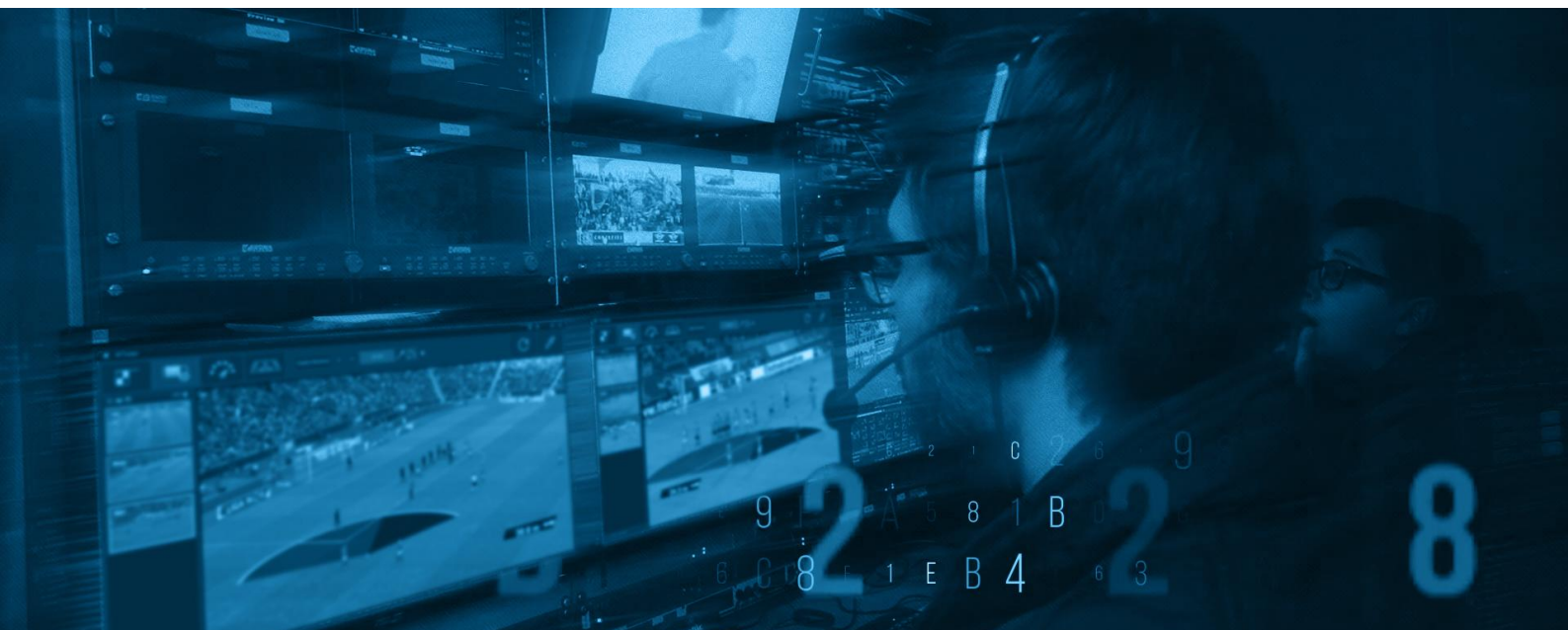
INTEGRATED SOLUTIONS

Our sports products seamlessly integrate with each other but are also ready to retrieve data from external sources and control third-party technologies, making them one of the most flexible solutions in the market.



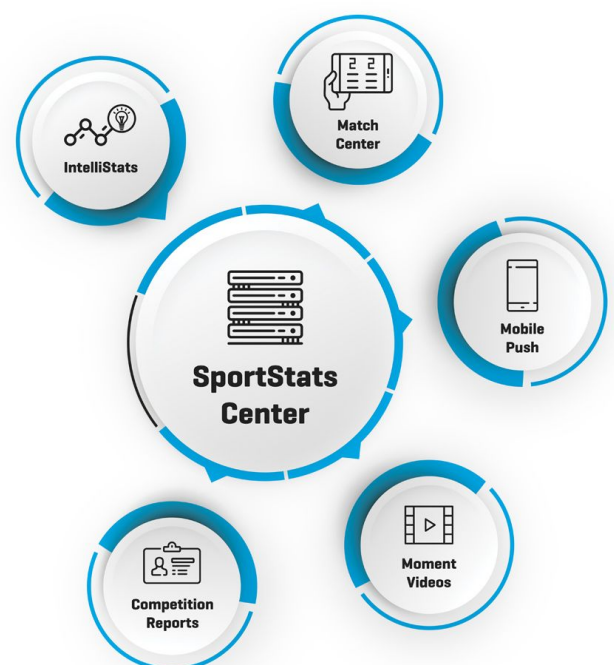
SCOUTING AND DATA MANAGEMENT

wTVision develops scouting systems through a continual improvement process. These systems have an intuitive user interface, specifically designed for each sport in order to gather a vast amount of statistical information and manage it in real time.



Using our data management system, SportStats Center, we provide end-to-end services to create, manage and feed **match centers, competition reports, mobile applications, websites** and **broadcasts**.

SportStats Center imports data from the scouting system and automatically updates standings and rankings, providing up-to-date statistics in real time. As a powerful database system, SportStats Center enables the delivery of relevant data, reports and video to clubs, federations, journalists, commentators or other media related companies.



SPORTSTATS SUITE

SportStats is wTVision's powerful suite of applications prepared to collect detailed sports statistics, integrate third-party data and generate state-of-the-art broadcast graphics.



Capable of providing **data** and detailed statistics and turn them into **broadcast graphics** for multiple sports, wTVision's suite of applications is the choice of some of the world's biggest competitions, such as MotoAmerica, the Spanish, French, Portuguese and Belgian Football Leagues, the ICC World Cricket League and all the International Judo Federation major events.

Adaptable to all kinds of operations, **SportStats Suite** includes dedicated and unique versions for each sport and has been used in 16 different versions, including Motorsports, Camel Races, Surf, Football, Judo or Cycling.

It controls all the **major graphics engines** in the market (including wTVision's R³ Space Engine) and can automatically generate broadcast graphics/slides suggestions, based on the competition's statistics.

TRACKING SYSTEMS

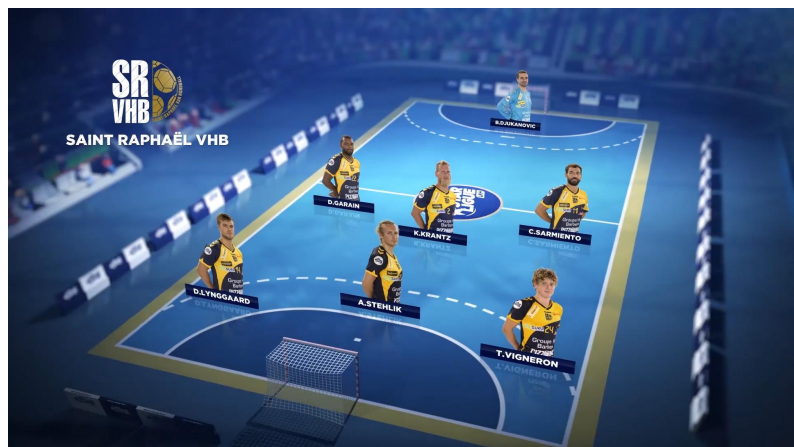
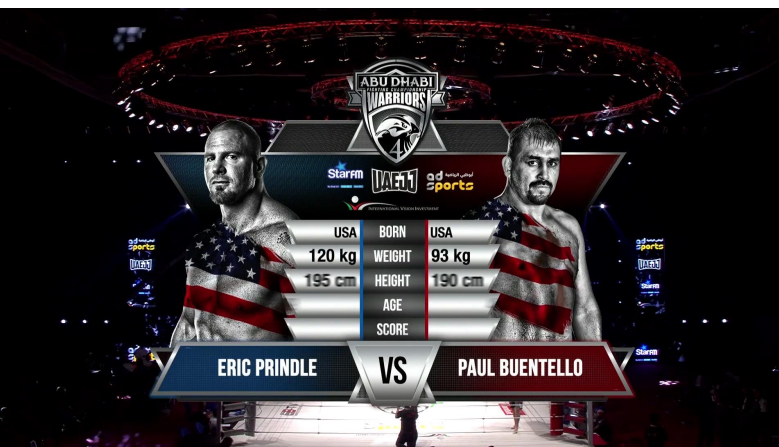
wTVision transforms tracking data into powerful graphics enriching your broadcast, allowing you to offer intuitive and insightful information to sports fans. Some examples:

- Positioning data
- Players and referees on the field
- Performance data
- Speed profiles
- Pass accuracy
- Accumulated distances and heat maps



BROADCAST GRAPHICS

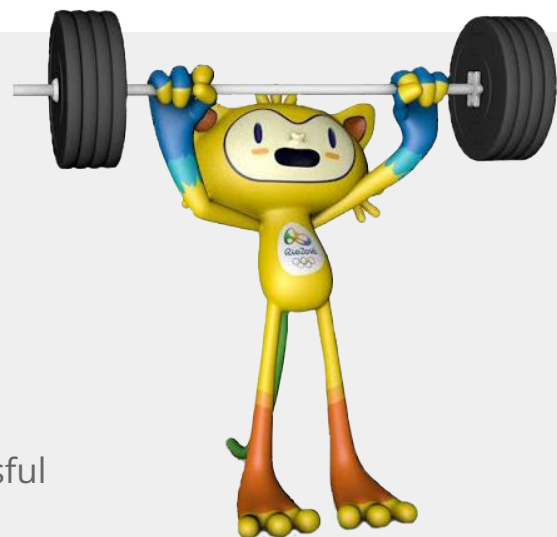
wTVision's powerful on-air graphics controllers receive information from our scouting systems and display it in real time, by controlling our own R³ Space Engine or other graphic engine of choice (Vizrt, Avid, Ross Video and ChyronHego).



CG Engines	R ³ Space Engine		ChyronHego
	Vizrt	Ross Video	Avid

Our broadcast designers can adapt and implement on-air graphics from an existing branding concept or work side by side with our creative team to develop a new concept from scratch.

wTVision's versatile approach, combining design, software and live operations, provides an unique competitive advantage to its creative concepts and allows to deliver end-to-end solutions that take into account all the contingencies and details for a successful broadcast operation.



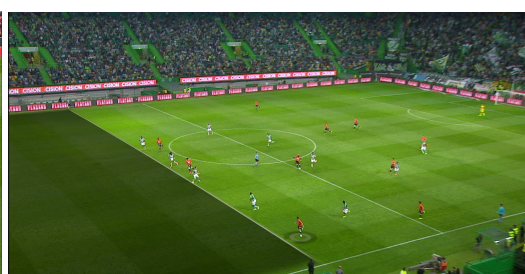
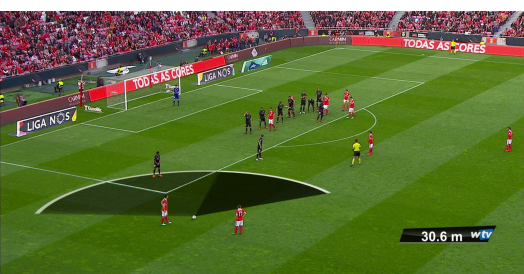
AUGMENTED REALITY

wTVision has the capacity to create appealing virtual solutions and the knowledge to develop both the creative and technical aspects to implement Augmented Reality during live broadcasts.

Our Augmented Reality solutions are customizable for any kind of sports broadcast with the collaboration of our skilled creative team, that develops virtual graphics using advanced motion design techniques.



AR³ Football is wTVision's product to immediately add Augmented Reality into live football matches, creating a more appealing and entertaining experience for fans and viewers all over the world.



OPERATION SERVICES

Our operational staff's expertise stretches across different aspects of a sports broadcast.

- Setting up all the necessary equipment to cover an event
- Gathering data during the game or coordinating incoming data from a third-party provider
- Setting up tracking systems and virtual graphics systems
- Managing real-time graphics production according to the director's requests
- Validating data collected and enriching the database with additional information





Take your sporting event to the next level!

CONTACT US NOW



sales@wtvision.com
wtvision.com

